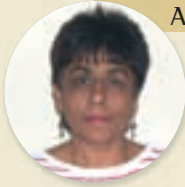




EXECUTIVE DIRECTORS 2003/04



ATEE

Assessment Technology
and Education Evaluation

Dr Vijay Reddy (Acting)

D.Ed, University of Durban-Westville
Education assessment techniques, policy
development and school improvement
strategies

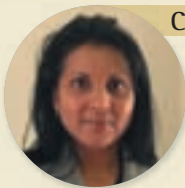


HRD

Human Resources Development

Dr Andre Kraak

DPhil, University of the Western Cape
Labour markets and economic analysis,
technical and higher education, and skills
development



CS

Corporate Services

Mrs Roshani Rampersadh

BSc, University of Natal
B.Com, University of South Africa
Company Directorship
Financial, human capital, information and
strategic management

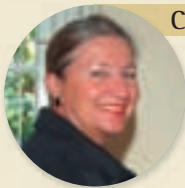


IRRD

Integrated Rural and
Regional Development

Mr Mike de Klerk

MA, University of Cape Town
Rural development policy, land issues and
agricultural economics

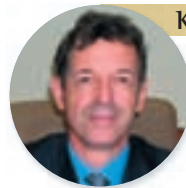


CYFD

Child, Youth and Family Development

Professor Linda Richter

PhD, University of Natal
Research to support human development
and the creation of safe environments for
children, youth and families



KM

Knowledge Management

Professor Michael Kahn

PhD, University of London
Policy analysis, project design and
evaluation in science and technology



D&G

Democracy and Governance

Professor Roger Southall

(Directorship effective until 31 March 2004)
PhD, University of Birmingham
D&G, Democratisation and African and
South African politics, political economy
and foreign policy



SAHA

Social Aspects of HIV/AIDS and Health

Dr Olive Shisana

ScD, Johns Hopkins University
HIV/AIDS, public health and health systems
development



D&G

Democracy and Governance

Professor Adam Habib

(Directorship effective from 1 April 2004)
PhD, City University of New York
Political studies, labour market analysis,
development strategy and policy
assessment



SAMM

Surveys, Analyses, Modelling
and Mapping

Dr Udesb Pillay

PhD, University of Minnesota
Urban and political geography, urban
development, local government reform,
local economic development, electoral
geography and public opinion analysis



EEPR

Employment and Economic
Policy Research

Dr Miriam Altman

PhD, University of Manchester
Employment policy, regional integration
and poverty reduction



SCI

Social Cohesion and Integration

Dr Wilmot James

PhD, University of Wisconsin-Madison
Comparative race relations, democratic
politics and migration patterns